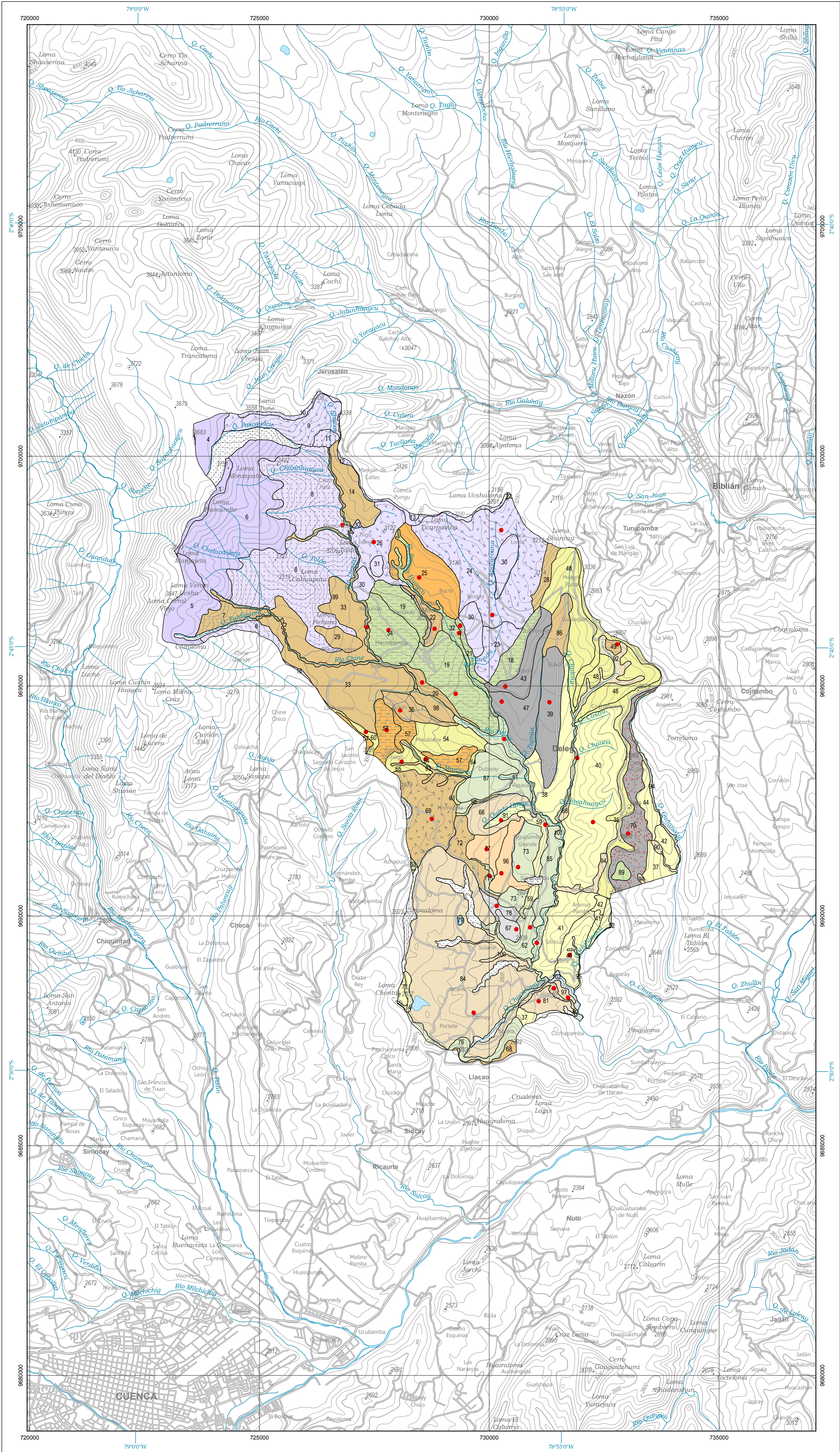


DÉLEG

MAPA GEOPEDOLÓGICO

MAPA CANTONAL

ECUADOR
Escala 1:50.000



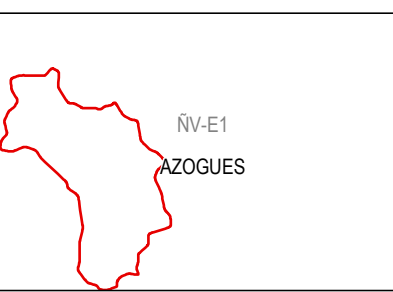
Base topográfica IGM
CELIR, Límites Cantonales, escala 1:50.000, 2010-2012.
(Carácter informativo y referencial)



DIVISIÓN CANTONAL



ÍNDICE DE HOJAS 1:50.000



ESCALA 1:50.000
0 1 2 3 4 5
km

Sistema Geográfico de Referencia para las Américas SIRGAS
Proyección UTM Zona 17 S
Equidistancia entre curvas de nivel 40 m

SIMBOLOGÍA
Curvas de nivel
Vías principales
Red hidrográfica
Palicaurcu
Salcedo
CUENCA
Patrimonio de Áreas Naturales del Estado PANE
Área de Intervención del Instituto Espacial Ecuatoriano
Cabeecera parroquial
Cabeecera cantonal
Capital de provincia
Cota
Calicata

INSUMO UTILIZADO

PRESENTE PROYECTO
Mapa Geomorfológico, 1:25.000, 2014.
Trabajos de campo 2014.
Cartografía de referencia:
MAG-PRONAREG-ORSTOM
Mapas Morfopedológicos de Costa y
Amazonia, 1:200.000 y 1:500.000, 1980-1984.
Mapas de Suelos de la Sierra, 1:50.000, 1980-1984.

TIPOS DE SUELOS

Clasificación (Soil Taxonomy SSS, USDA 2006)

Vertisoles

Chromic Hapluderts
Typic Hapluderts
Typic Haplusterts

Alfisolos

Aquic Hapludalfs
Typic Hapludalfs
Typic Haplustalfs

Mollisolos

Aquertic Argiudolls
Entic Hapludolls
Lithic Hapludolls
Oxyaquic Hapludolls
Pachic Hapludolls
Vertic Argiudolls
Typic Argiudolls

Aquic Haplustolls

Entic Haplustolls

Petrocalcic Calcistolls

Typic Argistolls

Typic Haplustolls

Typic Haplustolls

Typic Haplustolls

Typic Haplustolls

Typic Haplustolls

Typic Haplustolls

Typic Haplustolls

Typic Haplustolls

Typic Haplustolls

Typic Haplustolls

Typic Haplustolls

Typic Haplustolls

Typic Haplustolls

Typic Haplustolls

Typic Haplustolls

Typic Haplustolls

Typic Haplustolls

Typic Haplustolls

Typic Haplustolls

Typic Haplustolls

Typic Haplustolls

Typic Haplustolls

Typic Haplustolls

Typic Haplustolls

Typic Haplustolls

Typic Haplustolls

Typic Haplustolls

Typic Haplustolls

Typic Haplustolls

Typic Haplustolls

Typic Haplustolls

Typic Haplustolls

Typic Haplustolls

Typic Haplustolls

Typic Haplustolls

Typic Haplustolls

Typic Haplustolls

Typic Haplustolls

Typic Haplustolls

Typic Haplustolls

Typic Haplustolls

Typic Haplustolls

Typic Haplustolls

Typic Haplustolls

Typic Haplustolls

Typic Haplustolls

Typic Haplustolls

Typic Haplustolls

Typic Haplustolls

Typic Haplustolls

Typic Haplustolls

Typic Haplustolls

Typic Haplustolls

Typic Haplustolls

Typic Haplustolls

Typic Haplustolls

Typic Haplustolls

Typic Haplustolls

Typic Haplustolls

Typic Haplustolls

Typic Haplustolls

Typic Haplustolls

Typic Haplustolls

Typic Haplustolls

Typic Haplustolls

Typic Haplustolls

Typic Haplustolls

Typic Haplustolls

Typic Haplustolls

Typic Haplustolls

Typic Haplustolls

Typic Haplustolls

Typic Haplustolls

Typic Haplustolls

Typic Haplustolls

Typic Haplustolls

Typic Haplustolls

Typic Haplustolls

Typic Haplustolls

Typic Haplustolls

Typic Haplustolls

Typic Haplustolls

Typic Haplustolls

Typic Haplustolls

Typic Haplustolls

Typic Haplustolls

Typic Haplustolls

Typic Haplustolls

Typic Haplustolls

Typic Haplustolls

Typic Haplustolls

Typic Haplustolls

Typic Haplustolls

Typic Haplustolls

Typic Haplustolls

Typic Haplustolls

Typic Haplustolls

Typic Haplustolls

Typic Haplustolls

Typic Haplustolls

Typic Haplustolls

Typic Haplustolls

Typic Haplustolls

Typic Haplustolls

Typic Haplustolls

Typic Haplustolls

Typic Haplustolls

Typic Haplustolls

Typic Haplustolls

Typic Haplustolls

Typic Haplustolls

Typic Haplustolls

Typic Haplustolls

Typic Haplustolls

Typic Haplustolls

Typic Haplustolls

Typic Haplustolls

Typic Haplustolls

Typic Haplustolls

Typic Haplustolls

Typic Haplustolls

Typic Haplustolls

Typic Haplustolls

Typic Haplustolls

Typic Haplustolls

Typic Haplustolls

Typic Haplustolls

Inceptisoles

Aquic Dystric Eutrudepts
Aquic Eutrudepts
Aquic Humic Dystrudepts
Oxyaquic Eutrudepts
Typic Eutrudepts
Fluventic Haplustepts
Typic Haplustepts

Entisoles

Typic Udorthents
Aquic Ustorthents
Lithic Ustorthents
Typic Ustorthents

CIMAS FRÍAS DE LAS CORDILLERAS OCCIDENTAL Y REAL

Paisajes glaciares

ISOFRÍGIDO

1. Typic Melanocryands
2. Typic Melanocryands
3. Typic Haplocryands
4. Typic Melanocryands
5. Typic Melanocryands
6. Typic Melanocryands

ISOMÉSICO

7. Oxyaquic Hapludolls
8. Acrudoxic Hapludands
9. Pachic Melanudands
10. Acrudoxic Melanudands
11. Acrudoxic Fulvudands

VERTIENTES Y RELIEVES DE CUENCAS INTERANDINAS

Vertientes y relieves superiores de las Cuencas Interandinas, con parcial cobertura piroclástica (Sierra Central y Meridional)

ISOMÉSICO

12. Hydric Pachic Melanudands
13. Alic Hapludands
14. Entic Hapludolls
15. Entic Hapludolls

ISOTÉRMICO

16. Pachic Melanudands
17. Aquertic Argiudolls
18. Aquic Eutrudepts
19. Aquic Eutrudepts
20. Entic Hapludolls
21. Aquic Dystric Eutrudepts
22. Entic Hapludolls
23. Pachic Melanudands
24. Pachic Melanudands
25. Typic Hapludalfs
26. Pachic Melanudands
27. Typic Eutrudepts
28. Entic Hapludolls
29. Entic Hapludolls

RELIEVES DE FONDO DE CUENCAS INTERANDINAS

Relieves de fondo de Cuencas Interandinas con parcial cobertura piroclástica

ISOTÉRMICO

30. Typic Melanudands
31. Typic Melanudands
32. Oxyaquic Eutrudepts
33. Typic Argiudolls
34. Oxyaquic Eutrudepts

ISOTÉRMICO

35. Typic Udorthents
36. Vertic Argiudolls
37. Typic Ustorthents
38. Typic Ustorthents
39. Typic Hapluderts
40. Typic Ustorthents
41. Typic Ustorthents
42. Typic Ustorthents
43. Typic Hapluderts
44. Typic Ustorthents
45. Typic Ustorthents
46. Typic Ustorthents
47. Typic Hapluderts
48. Typic Ustorthents
49. Entic Hapludolls
50. Typic Haplustepts
51. Typic Haplustepts
52. Typic Ustorthents
53. Typic Udorthents
54. Typic Udorthents
55. Typic Haplustepts
56. Typic Udorthents
57. Aquic Hapludalfs
58. Aquic Humic Dystrudepts
59. Typic Ustorthents
60. Typic Udorthents
61. Typic Udorthents
62. Typic Haplustepts
63. Aquic Dystric Eutrudepts
64. Typic Udorthents
65. Typic Udorthents
66. Entic Haplustolls
67. Typic Haplusterts
68. Lithic Hapludolls
69. Pachic Hapludolls
70. Chromic Hapluderts

ISOTÉRMICO

71. Lithic Ustorthents
72. Pachic Hapludolls
73. Typic Haplustepts
74. Lithic Ustorthents
75. Typic Haplustepts
76. Typic Haplustepts
77. Typic Haplustepts
78. Typic Haplustepts
79. Entic Haplustolls
80. Aquic Haplustolls
81. Aquic Haplustolls
82. Petrocalcic Calcistolls
83. Entic Haplustolls
84. Entic Haplustolls
85. Typic Haplustepts
86. Typic Argiudolls
87. Typic Haplustepts
88. Typic Haplustepts
89. Typic Eutrudepts
90. Typic Haplustolls
91. Aquic Ustorthents
92. Typic Haplustolls
93. Entic Hapludolls
94. Typic Haplustolls
95. Typic Ustorthents
96. Typic Haplustepts
97. Typic Haplustepts
98. Typic Haplustepts
99. Oxyaquic Hapludolls
100. Typic Haplustolls
101. Fluventic Haplustepts
102. Typic Haplusterts

LEYENDA RESUMIDA (*)

(*) Para leyenda detallada consultar el archivo *Leyenda_Detallada_Canton_DELEG.xls*

CONTEXTO MORFOLÓGICO



RÉGIMEN DE TEMPERATURA DEL SUELO



Paisajes glaciares
Relieves de los márgenes de las cimas
Vertientes y relieves superiores de las Cuencas Interandinas, con parcial cobertura piroclástica (Sierra Central y Meridional)
Relieves de fondo de Cuencas Interandinas con parcial cobertura piroclástica
Medio aluvial de

Isofrío
Isotérmico
Isomésico
Unidades sin caracterización

UNIDAD EJECUTORA MAGAP-PRAT PROGRAMA SIGTERRAS		
Proyecto: Levantamiento de Cartografía Temática a escala 1:25.000. Lote 2		
Realizado por:	Fiscalizado por:	
Mapa Geopedológico del cantón DÉLEG		
Escala de trabajo 1:25.000	Escala de impresión 1:50.000	Fecha de elaboración: septiembre de 2015