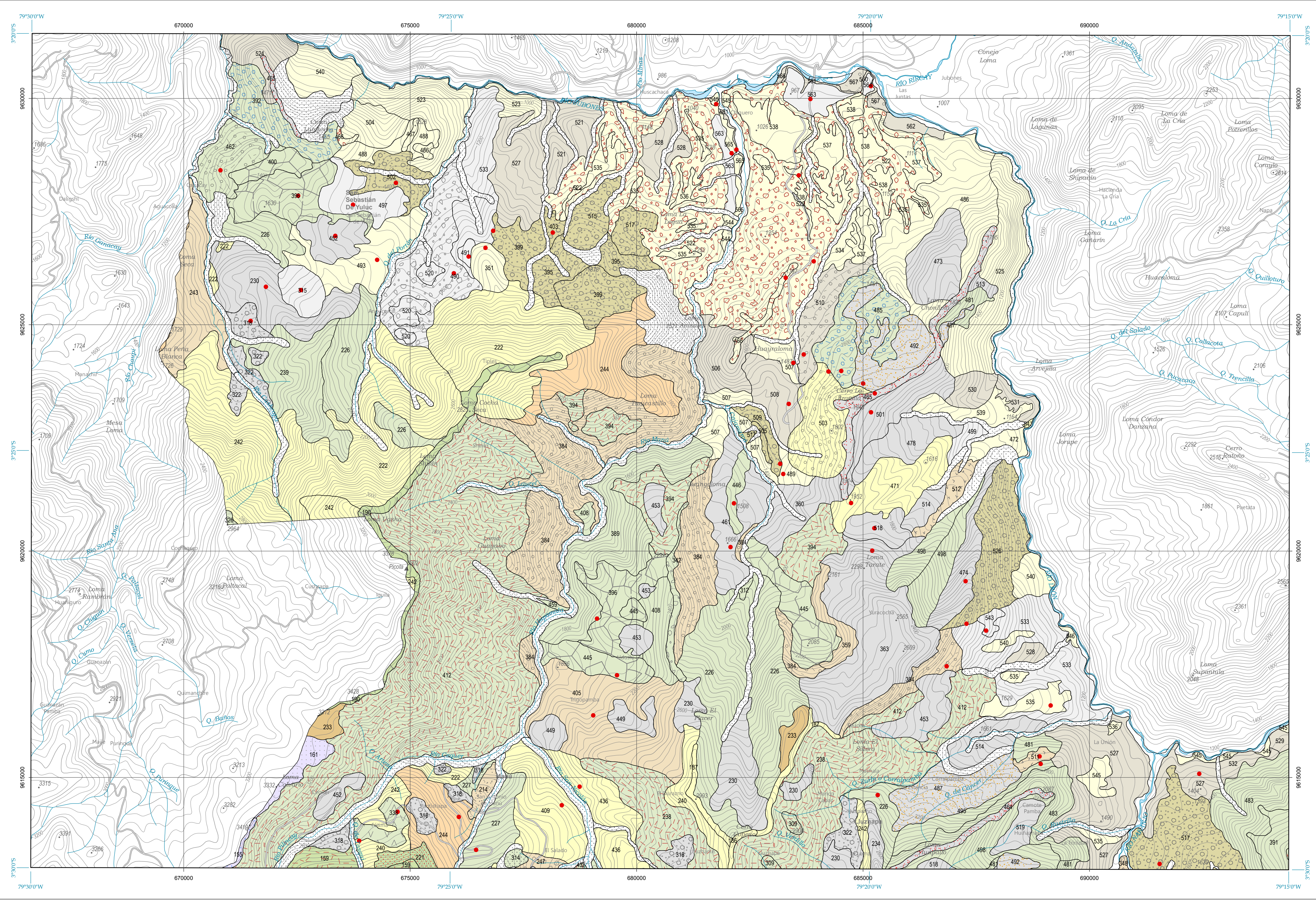
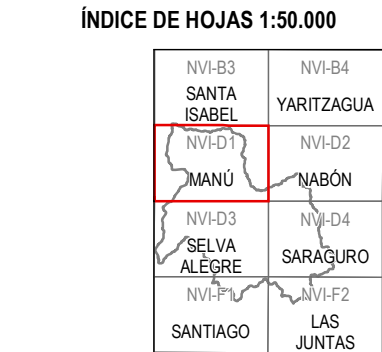
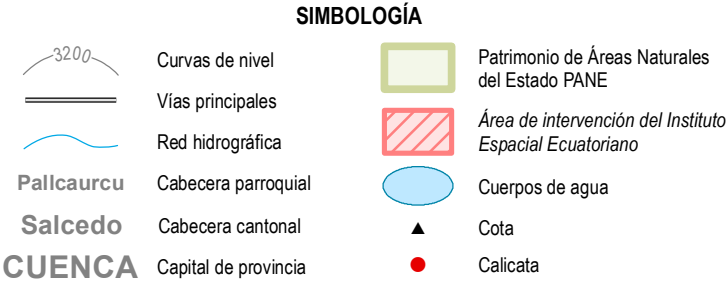
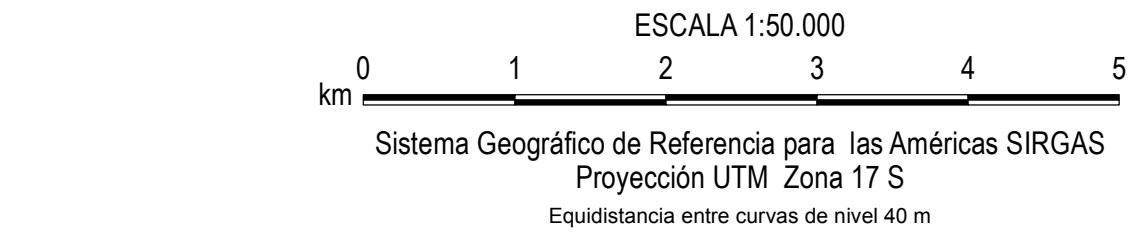
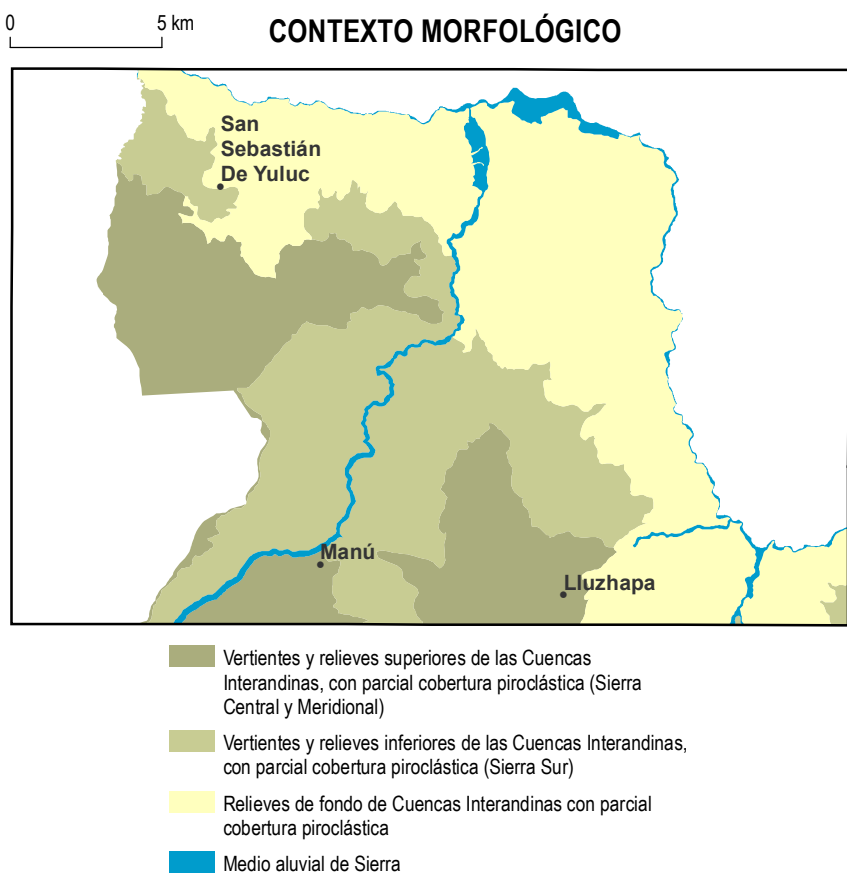


SARAGURO
MAPA GEOPEDOLÓGICO

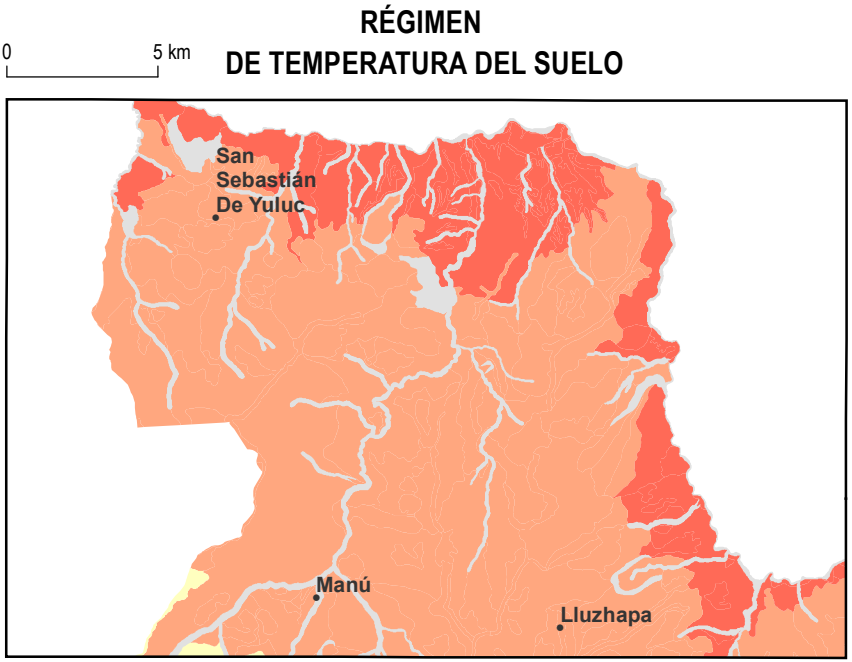


Base topográfica IGM
CELIR, Límites Cantonales, escala 1:50.000, 2010-2012.
(Carácter informativo y referencial)



Las hojas disponibles a nivel cantonal no incluyen aquellas cubiertas completamente por PANE.

INSUMO UTILIZADO
Mapa Geomorfológico, 1:25.000, 2014.
Trabajos de campo 2014.
Cartografía de referencia:
MAG-PRONAREG-ORSTOM
Mapas Morfológicos de Costa y
Amazonia, 1:200.000 y 1:500.000, 1980-1984.
Mapas de Suelos de la Sierra, 1:50.000, 1980-1984.



| TIPOS DE SUELOS | | |
|--|----------------------|-----------------------|
| Clasificación (Soil Taxonomy SSS, USDA 2006) | | |
| Vertisoles | Andisoles | Aridisoles |
| Chromic Calciusterts | Acruoxic Hapludands | Typic Haplocalcids |
| Chromic Haplusterts | Acruoxic Melanudands | Fluentic Haplocambids |
| Typic Calciusterts | Thaptic Hapludands | Ustic Haplocambids |
| Typic Haplusterts | | Typic Haplocambids |
| Leptic Haplotorrerts | | |
| Typic Calcitorrerts | | |
| Typic Haplotorrerts | | |
| Alfisoles | Inceptisoles | Entisoles |
| Inceptic Haplustalfs | Andic Dystrudepts | Aridic Ustorthents |
| Mollisoles | Oxic Dystrudepts | Vertic Ustorthents |
| Typic Hapludolls | Vertic Eutruudepts | Typic Udorthents |
| Aridic Haplustolls | Aridic Calcicustepts | Typic Ustorthents |
| Entic Haplustolls | Aridic Haplustepts | Lithic Torriorthents |
| Lithic Haplustolls | Andic Dystrustepts | Typic Torriorthents |
| Oxic Haplustolls | | |
| Pachic Haplustolls | | |
| | | |

| UNIDADES SIN CARACTERIZACIÓN | | |
|---|-----------------------------|---------------------------------|
| Áreas Misceláneas (valles en V, barrancos...) | Suelo alterado, zona urbana | No aplicable (lagunas, ríos...) |

| LEYENDA RESUMIDA (*) | | |
|---|---|--|
| VERTIENTES Y RELIEVES DE CUENCAS INTERANDINAS <i>Vertientes y relieves superiores de las Cuencas Interandinas, con parcial cobertura piroclástica (Sierra Central y Meridional)</i> | 389. Typic Haplustepts 391. Typic Haplustepts 392. Aridic Haplustepts 394. Andic Dystrustepts 395. Typic Haplocalcids 396. Vertic Haplustepts 399. Typic Haplocalcids 400. Vertic Haplustepts 402. Oxic Dystrustepts 403. Typic Haplocalcids 405. Typic Haplustolls 408. Typic Haplustepts 409. Typic Ustorthents 412. Andic Dystrustepts 432. Andic Dystrustepts 435. Typic Dystrustepts 436. Typic Ustorthents 445. Vertic Haplustepts 446. Typic Haplustepts 449. Typic Haplusterts 452. Typic Haplusterts 453. Typic Haplusterts 459. Typic Haplustepts 461. Typic Haplusterts | 492. Chromic Calciclusterts 493. Typic Torriorthents 495. Typic Haplustepts 497. Typic Haplotorrerts 498. Typic Haplustepts 499. Typic Haplotorrerts 501. Typic Haplusterts 502. Typic Haplocalcids 503. Aridic Ustorthents 504. Typic Torriorthents 505. Typic Haplocalcids 506. Typic Haplocambids 507. Typic Torriorthents 508. Typic Haplocambids 509. Typic Haplocalcids 510. Ustic Haplocambids 511. Pachic Haplustolls 512. Pachic Haplustolls 513. Typic Haplusterts 514. Typic Haplusterts 515. Typic Haplocalcids 517. Typic Haplocalcids 518. Typic Haplusterts 519. Typic Haplusterts |
| 238. Andic Dystrustepts 239. Dystric Haplustepts 240. Typic Ustorthents 242. Typic Ustorthents 243. Entic Haplustolls 244. Inceptic Haplustalfs 247. Lithic Haplustolls 309. Andic Dystrustepts 312. Typic Haplustepts 314. Udic Haplustepts 315. Typic Haplotorrerts 318. Typic Calciclusterts 322. Typic Calciclusterts 326. Oxyaquic Haplustepts 338. Humic Dystrustepts | ISOHIPERTERMICO 462. Aridic Calciclusterts RELIEVES DE FONDO DE CUENCAS INTERANDINAS <i>Relieves de fondo de Cuencas Interandinas con parcial cobertura piroclástica</i> | ISOHIPERTERMICO 520. Leptic Haplotorrerts ISOHIPERTERMICO 521. Typic Haplocambids 522. Lithic Torriorthents 523. Typic Torriorthents 524. Typic Haplocambids 525. Typic Torriorthents 526. Typic Haplocalcids 527. Typic Haplocambids 528. Typic Haplocambids 529. Typic Haplocambids 530. Typic Haplocambids 531. Typic Haplocambids 532. Typic Haplocambids 533. Typic Calciclorrerts 534. Typic Torriorthents 535. Typic Torriorthents 536. Typic Torriorthents 537. Typic Torriorthents 538. Typic Torriorthents 539. Typic Torriorthents 540. Typic Torriorthents 543. Typic Haplotorrerts 544. Typic Torriorthents 545. Typic Torriorthents |
| <i>Vertientes y relieves inferiores de las Cuencas Interandinas, con parcial cobertura piroclástica (Sierra Sur)</i> | ISOTERMICO 342. Lithic Haplustepts 348. Lithic Haplustolls 351. Typic Torriorthents 359. Typic Haplustolls 360. Typic Haplusterts 363. Typic Haplusterts 384. Andic Haplustolls | 546. Typic Torriorthents 547. Vertic Ustorthents MEDIO ALUVIAL DE SIERRA <i>Medio aluvial de Sierra</i> ISOHIPERTERMICO 560. Fluventic Haplocambids 561. Fluventic Haplocambids 562. Typic Haplocambids 563. Typic Haplotorrerts 564. Typic Haplotorrerts 565. Typic Torriorthents 566. Ustic Haplocambids 567. Ustic Haplocambids |

(*) Para leyenda detallada consultar el archivo [Leyenda_Detallada_Canton_SARAGURO.xls](#)

| | | |
|--|---|--|
|  <div>Ministerio de Agricultura, Ganadería, Acuicultura y Pesca</div> <div>SECRETARÍA</div> | UNIDAD EJECUTORA MAGAP-PRAT PROGRAMA SIGTIERRAS | |
| Proyecto: Levantamiento de Cartografía Temática a escala 1:25.000 Lote 2 | | |
| Realizado por:  | | Fiscalizado por:  |
| Mapa Geopedológico del cantón SARAGURO, hoja 2 de 7, NVI-D1 | | |
| Escala de trabajo 1:25.000 | Escala de impresión 1:50.000 | Fecha de elaboración: noviembre de 2015 |